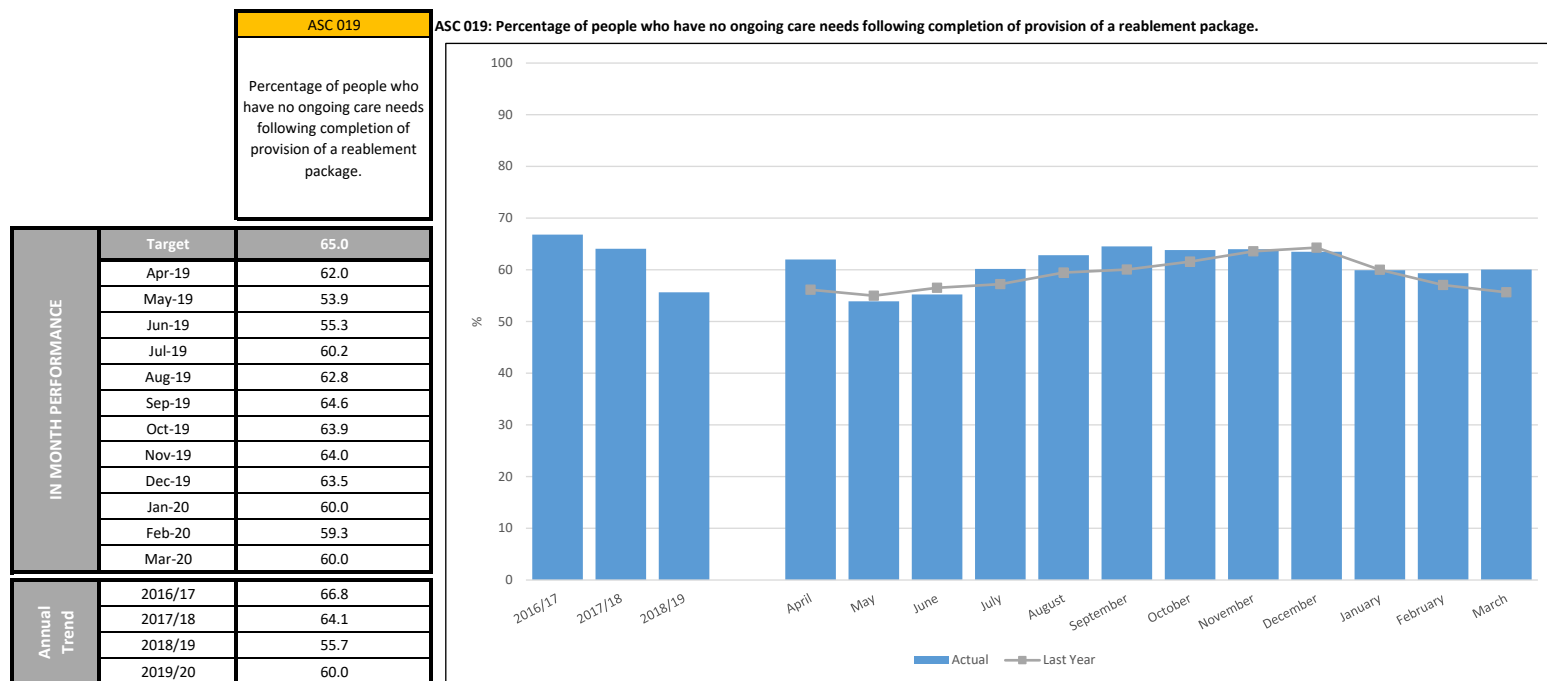




Adult Social Care

End of Year Scrutiny Performance Report 2019-20

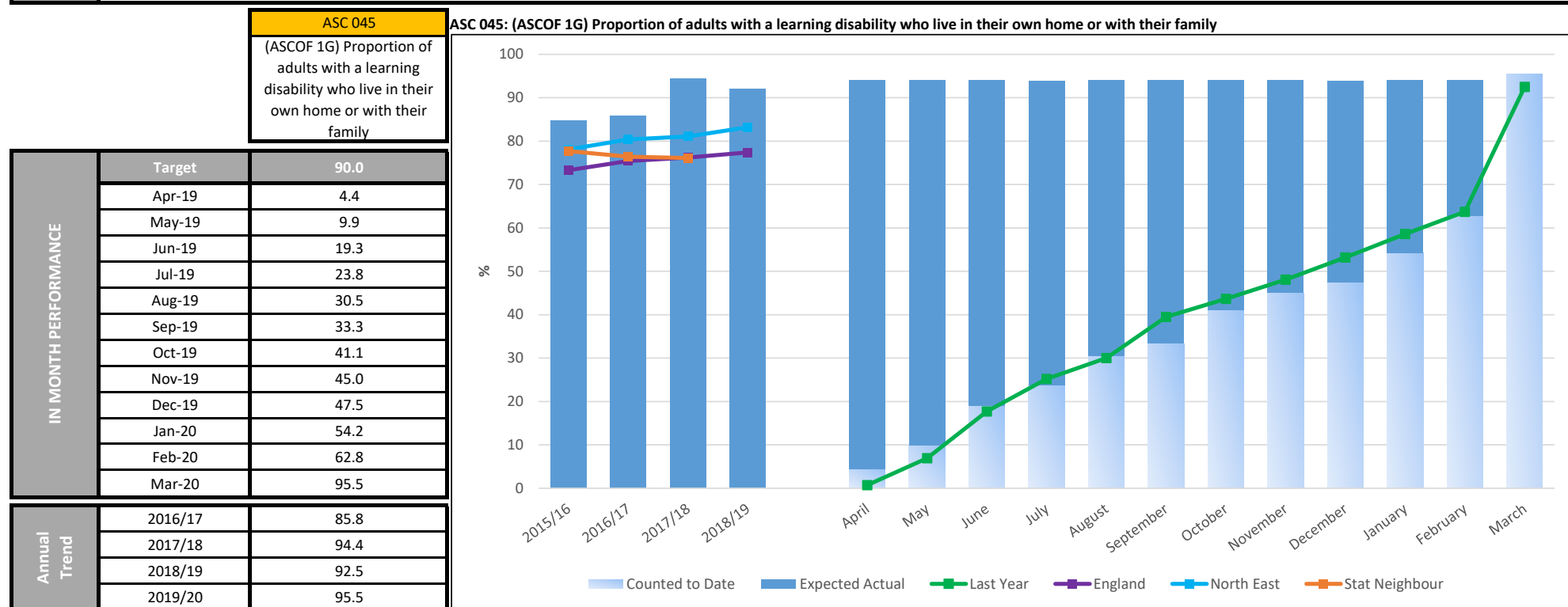
MANAGING DEMAND	
ASC 019 - Percentage of people who have no ongoing care needs following completion of provision of a reablement package	
DEFINITION	<p>REDUCE THE NEED: ASC 019 – Percentage of people who have no ongoing care needs following completion of provision of a reablement package (Bigger is better)</p> <p>Numerator: Of those in the denominator, those who have had a completed reablement review with outcomes of 'No Services Provided or Identified, Long Term Support Ended, Universal Services/Signposted'</p> <p>Denominator: The total number of clients completing a reablement package during the period</p>
Performance Analysis	<p>Since April the percentage of clients who have completed a reablement package with an outcome of 'No Service Provided or Identified, Long Term Support Ended or Universal Services/Signposted' is 60%. In terms of actual numbers out of the 478 clients who have completed a reablement package 287 had no ongoing care needs.</p> <p>The last quarter of the year has seen a slight drop in the percentage of people who have had no ongoing care needs following completion of a reablement package compared to the middle of the year. During both January and February Opel Level 3 had been in place, whilst the coronavirus pandemic started during March. This has had an impact on the number of people receiving a reablement package due to being discharged from hospital. Out of the 133 clients whose reablement packages ended during Quarter 4, 58 (44%) were referred to RIACT as part of a hospital discharge.</p> <p>When compared to 2018/19 end of year figure this year has seen a 4% increase in the percentage of clients who have no ongoing care needs after completing a reablement package. This improvement can be attributed to the appointment of a new team leader within RIACT. Twice weekly meetings are now held with staff which has enabled support to be provided along with guidance and a clear direction of how the service is to develop. The RIACT Team also now offer clients the use of small pieces of equipment which are anticipated to assist in either the re-establishing the original level of independence or seeing the client's care needs reduce.</p> <p>A breakdown of the figures for each month can be found on the following page.</p>



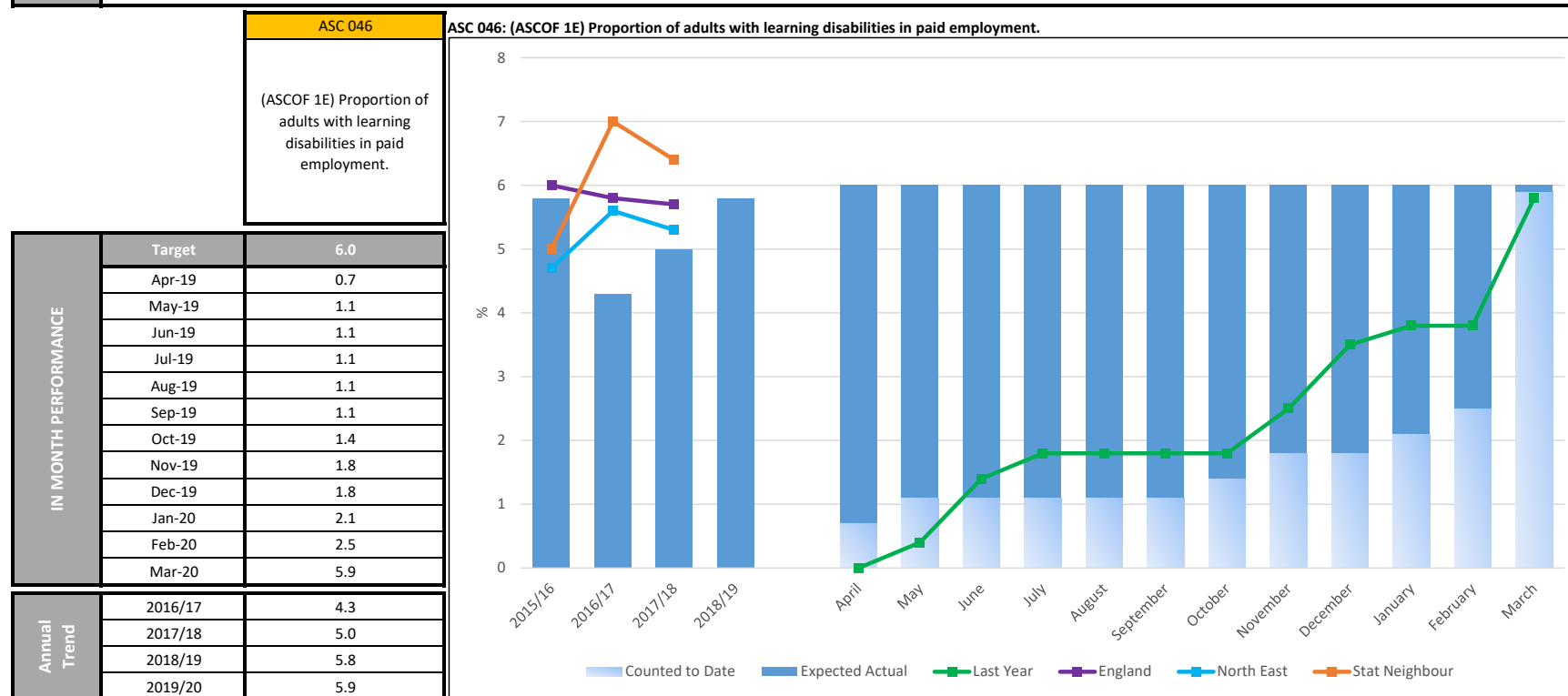
MANAGING DEMAND	
ASC 019 - Percentage of people who have no ongoing care needs following completion of provision of a reablement package	
DEFINITION	<p>REDUCE THE NEED: ASC 019 – Percentage of people who have no ongoing care needs following completion of provision of a reablement package (Bigger is better)</p> <p>Numerator: Of those in the denominator, those who have had a completed reablement review with outcomes of 'No Services Provided or Identified, Long Term Support Ended, Universal Services/Signposted'</p> <p>Denominator: The total number of clients completing a reablement package during the period</p>

Monthly breakdown of figures			
	Total no of clients completing reablement	No of clients with no ongoing care needs	Percentage of clients completing packages and outcomed with no ongoing care needs
April	50	31	62%
May	52	23	44%
June	53	27	51%
July	51	25	49%
August	42	25	60%
September	44	29	66%
October	41	20	49%
November	42	21	50%
December	45	13	29%
January	45	17	38%
February	30	15	50%
March	67	34	51%

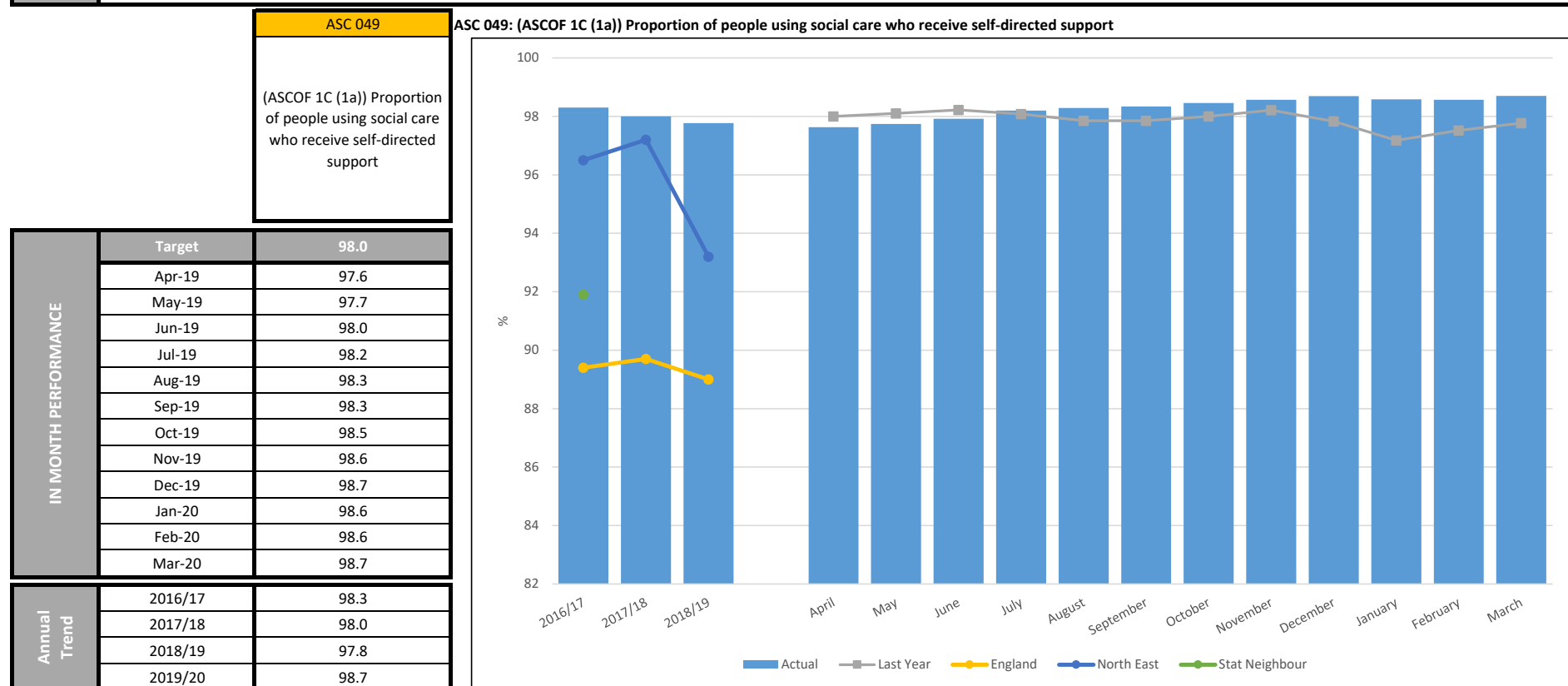
SELF DIRECTED SUPPORT	
ASC 045 - Proportion of adults with a learning disability who live in their own home or with their family	
DEFINITION	<p>QUALITY OF LIFE: ASC 045 (ASCOF 1G) – Proportion of adults with a learning disability who live in their own home or with their family (Bigger is better)</p> <p>Numerator: All people within the denominator who are “living on their own or with their family.” Source: SALT</p> <p>Denominator: Number of working-age learning-disabled clients known to CASSRs during the period. This includes clients who received long term support during the year and with a primary support reason of learning disability support. All support settings should be included (i.e. residential, nursing and community settings)</p>
Performance Analysis	<p>In terms of actual figures out of the 288 working aged clients who have a learning disability and receiving long term support. Since April there were 275 clients accommodation statuses captured as either living in their own home or with family. Therefore the proportion of adults with a learning disability living in settled accommodation where the information has been captured since April is 95.5%. The target of 90% has been surpassed.</p> <p>When compared to the year end figures of the past 4 years 2019/20 has seen the highest proportion of adults with a learning disability living in settled accommodation.</p> <p>A breakdown of the figures can be found on the previous page.</p>



SELF DIRECTED SUPPORT	
ASC 046 - Proportion of adults with learning disabilities in paid employment	
DEFINITION	<p>QUALITY OF LIFE: ASC 046 (ASCOF 1E) Proportion of adults with learning disabilities in paid employment. (Bigger is better)</p> <p>Numerator: All people within the denominator, who are in employment. Source: SALT</p> <p>Denominator: Number of working-age learning-disabled clients known to CASSRs during the period. This includes clients who received long term support during the year and with a primary support reason of learning disability support. All support settings should be included (i.e. residential, nursing and community settings)</p>
Performance Analysis	<p>In terms of actual figures out of the 288 working aged clients who have a learning disability and receiving long term support. Since April 2019 there were 17 clients statuses captured as being in paid employment. Therefore the proportion of adults with a learning disability living in paid employment where the information has been captured since April is 5.9%.</p> <p>When compared to the year end figure for the past 4 years 2019/20 has seen the highest proportion of adults with a learning disability in paid employment.</p> <p>The data on the previous page shows Darlington's 2018/19 performance compared to our regional neighbours. The figures show that out of the 12 regional authorities Darlington is currently 5th. It should also be noted that many of the other local authorities interpretation of paid employment does not meet our current definition.</p> <p>A breakdown of the figures can be found on the previous page.</p>



SELF DIRECTED SUPPORT	
ASC 049 - Proportion of people using social care who receive self-directed support	
DEFINITION	<p>QUALITY OF LIFE: ASC 049 (ASCOF 1C (1a)) – Proportion of people using social care who receive self-directed support (Bigger is better)</p> <p>Numerator: The number of users receiving either a) Direct Payment, b) Part Direct Payment or c) CASSR managed Personal Budget at the year-end 31st March: SALT</p> <p>Denominator: Clients (aged 18 or over) accessing long term community support at the year end 31st March: SALT</p>
Performance Analysis	<p>Since April the proportion of clients using social care who receive self-directed support is 98.7%. In terms of actual numbers this equates to 747 individuals receiving self-directed support.</p>



SELF DIRECTED SUPPORT

ASC 049 - Proportion of people using social care who receive self-directed support

DEFINITION

QUALITY OF LIFE: ASC 049 (ASCOF 1C (1a)) – Proportion of people using social care who receive self-directed support (Bigger is better)

Numerator: The number of users receiving either a) Direct Payment, b) Part Direct Payment or c) CASSR managed Personal Budget at the year-end 31st March: SALT

Denominator: Clients (aged 18 or over) accessing long term community support at the year end 31st March: SALT

18-64

Type of self directed support	
Direct Payments	187
CASSR Managed Personal Budget	158
Part Direct Payments	62
Total	407

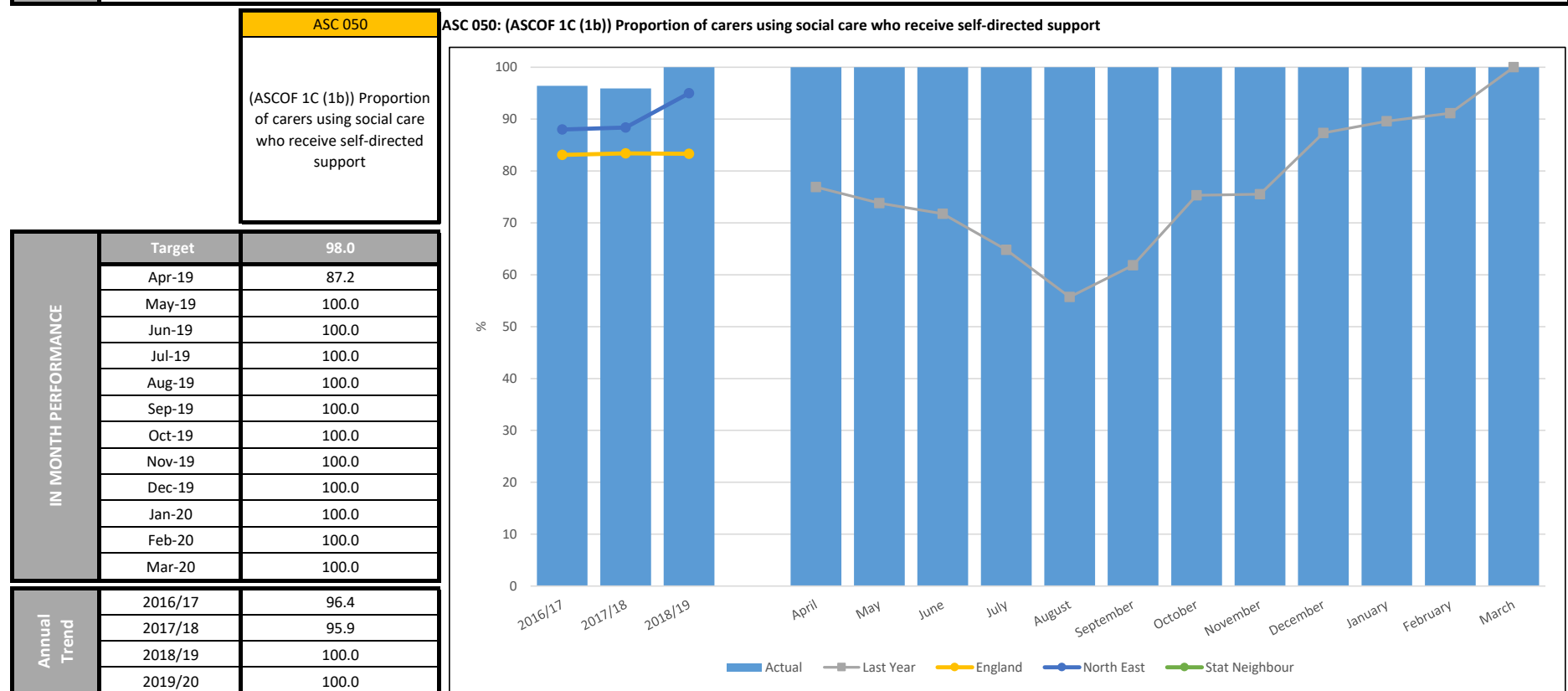
Primary Support Reason	
Learning Disability Support	257
Physical Support - Personal Care Support	100
Mental Health Support	32
Physical Support - Access and Mobility Only	8
Social Support - Support for Social isolation / other	6
Social Support - Substance misuse support	2
Support with memory and cognition	1
Sensory Support - support for dual impairment	1
Sensory Support - support for hearing impairment	0
Sensory Support - Support for Visual Impairment	0
Total	407

65+

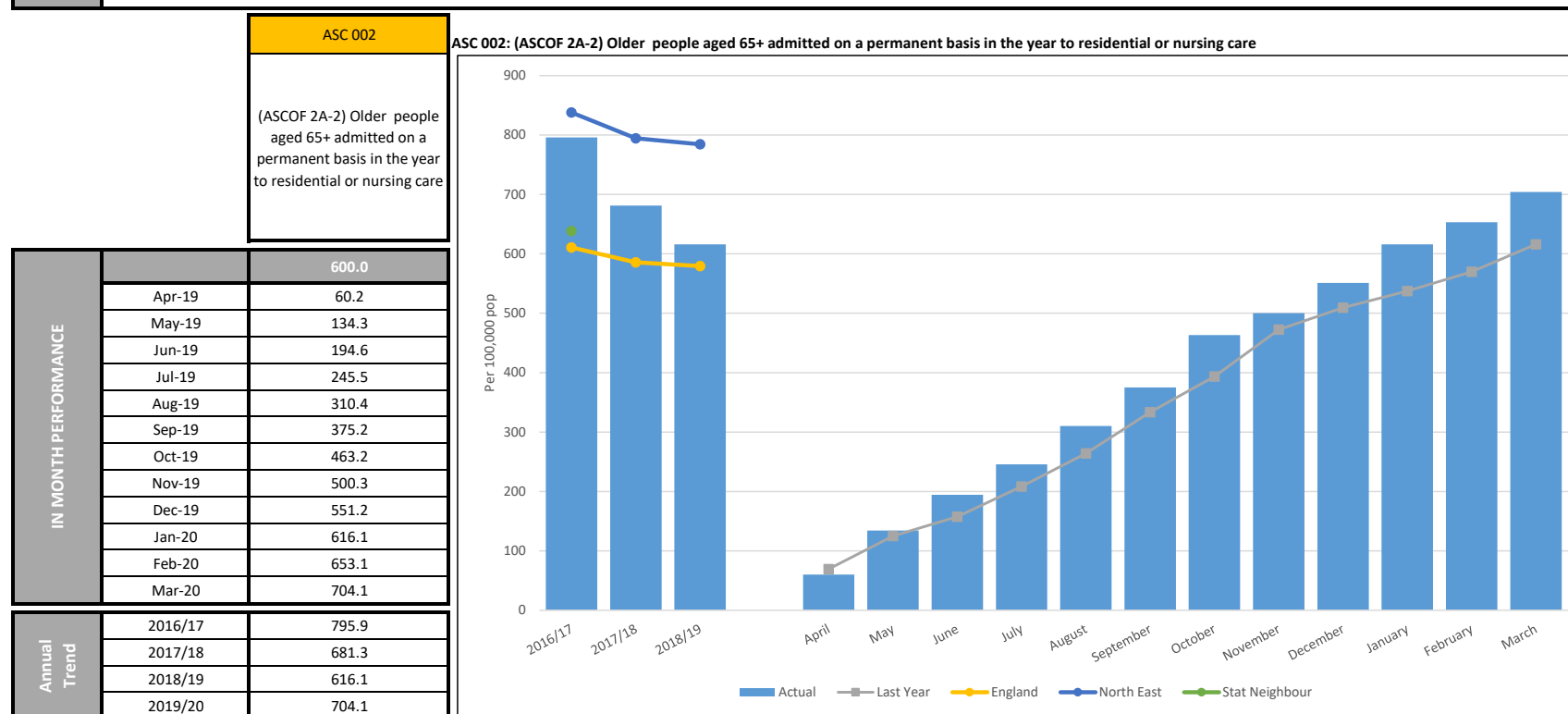
Type of self directed support	
CASSR Managed Personal Budget	285
Direct Payments	46
Part Direct Payments	9
Total	340

Primary Support Reason	
Physical Support - Personal Care Support	214
Support with memory and cognition	29
Learning Disability Support	34
Physical Support - Access and Mobility Only	27
Mental Health Support	23
Social Support - Support for Social isolation / other	9
Sensory Support - support for hearing impairment	2
Sensory Support - Support for Visual Impairment	1
Sensory Support - support for dual impairment	1
Social Support - Support misuse support	0
Total	340

SELF DIRECTED SUPPORT	
ASC 050 - Proportion of carers using social care who receive self-directed support	
DEFINITION	<p>QUALITY OF LIFE: ASC 050 (ASCOF 1C (1b)) – Proportion of carers using social care who receive self-directed support (Bigger is better)</p> <p>Numerator: The number of users receiving either a) Direct Payment, b) Part Direct Payment or c) CASSR managed Personal Budget at the year-end 31st March: SALT</p> <p>Denominator: Carers (caring for someone aged 18 or over) receiving carer-specific services in the year to 31st March: SALT</p>
Performance Analysis	<p>Since April the proportion of carers using social care who receive self-directed support is 100%. In terms of actual numbers this equates to 101 carers receiving self-directed support.</p> <p>All carers who are in receipt of a commissioned service are now recorded as having a personal budget, therefore this indicator should always be recorded as 100% of carers being in receipt of self-directed support.</p>



SELF DIRECTED SUPPORT	
ASC 002- Older people aged 65+ admitted on a permanent basis in the year to residential or nursing care (per 100,000 of pop)	
DEFINITION	<p>REDUCE THE NEED: ASC 002 (ASCOF 2A-2) – Older people aged 65+ admitted on a permanent basis in the year to residential or nursing care. (Smaller is better)</p> <p>Numerator: The sum of the number of council-supported permanent admissions of older people (aged 65 and over) to residential and nursing care during the year (excluding transfers between residential and nursing care): SALT</p> <p>Denominator: Size of older people population (aged 65 and over) in area (ONS mid-year population estimates).</p>
Performance Analysis	<p>Since April the number of 65+ who have been permanently admitted to residential care is 152 (704 per 100,000 population).</p> <p>Although our permanent admissions have increased, when Darlington's 2019/20 performance is compared to the regional figures taken from the ASCOF 2018/19 Return we continued to be 4th out of the 12 regional authorities. The 2019/20 ASCOF figures will not be available until towards the end of the year.</p> <p>Validation forum continues to be assured that cases presented with a request for a permanent admission are appropriate.</p>



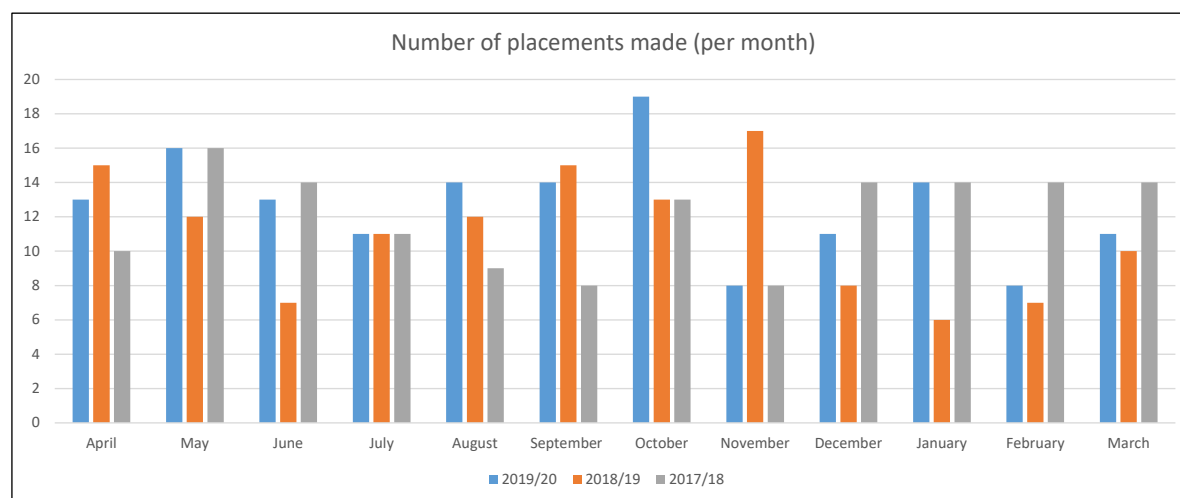
SELF DIRECTED SUPPORT

ASC 002- Older people aged 65+ admitted on a permanent basis in the year to residential or nursing care (per 100,000 of pop)

DEFINITION	REDUCE THE NEED: ASC 002 (ASCOF 2A-2) – Older people aged 65+ admitted on a permanent basis in the year to residential or nursing care. (Smaller is better)
	Numerator: The sum of the number of council-supported permanent admissions of older people (aged 65 and over) to residential and nursing care during the year (excluding transfers between residential and nursing care): SALT
	Denominator: Size of older people population (aged 65 and over) in area (ONS mid-year population estimates).

Breakdown of placements made per month for the past 3 years

	April	May	June	July	August	September	October	November	December	January	February	March	Total
2019/20	13	16	13	11	14	14	19	8	11	14	8	11	152
2018/19	15	12	7	11	12	15	13	17	8	6	7	10	133
2017/18	10	16	14	11	9	8	13	8	14	14	14	14	145



ASCOF 2a(2) - Regional breakdown for permanent admissions 65+ - 2018-19 (smaller is better)

Stockton-on-Tees UA	574.7
South Tyneside	592.6
North Tyneside	598.7
Darlington UA	616.1
Durham UA	712.8
Northumberland UA	717.9
Hartlepool UA	723.9
Gateshead	886.5
Redcar and Cleveland	920.0
Newcastle upon Tyne	927.7
Sunderland	1102.8
Middlesbrough UA	1172.8

SELF DIRECTED SUPPORT
ASC 002- Older people aged 65+ admitted on a permanent basis in the year to residential or nursing care (per 100,000 of pop)

DEFINITION	<p>REDUCE THE NEED: ASC 002 (ASCOF 2A-2) – Older people aged 65+ admitted on a permanent basis in the year to residential or nursing care. (Smaller is better)</p> <p>Numerator: The sum of the number of council-supported permanent admissions of older people (aged 65 and over) to residential and nursing care during the year (excluding transfers between residential and nursing care); SALT</p> <p>Denominator: Size of older people population (aged 65 and over) in area (ONS mid-year population estimates).</p>
------------	---

Age Breakdown

65-70	71-75	76-80	81-85	86-90	91-95	96-100	100+
9	14	19	35	40	23	11	1

Breakdown of Service Type for each placement

Service Type	
Permanent Residential Care	138
Permanent Nursing Care	14

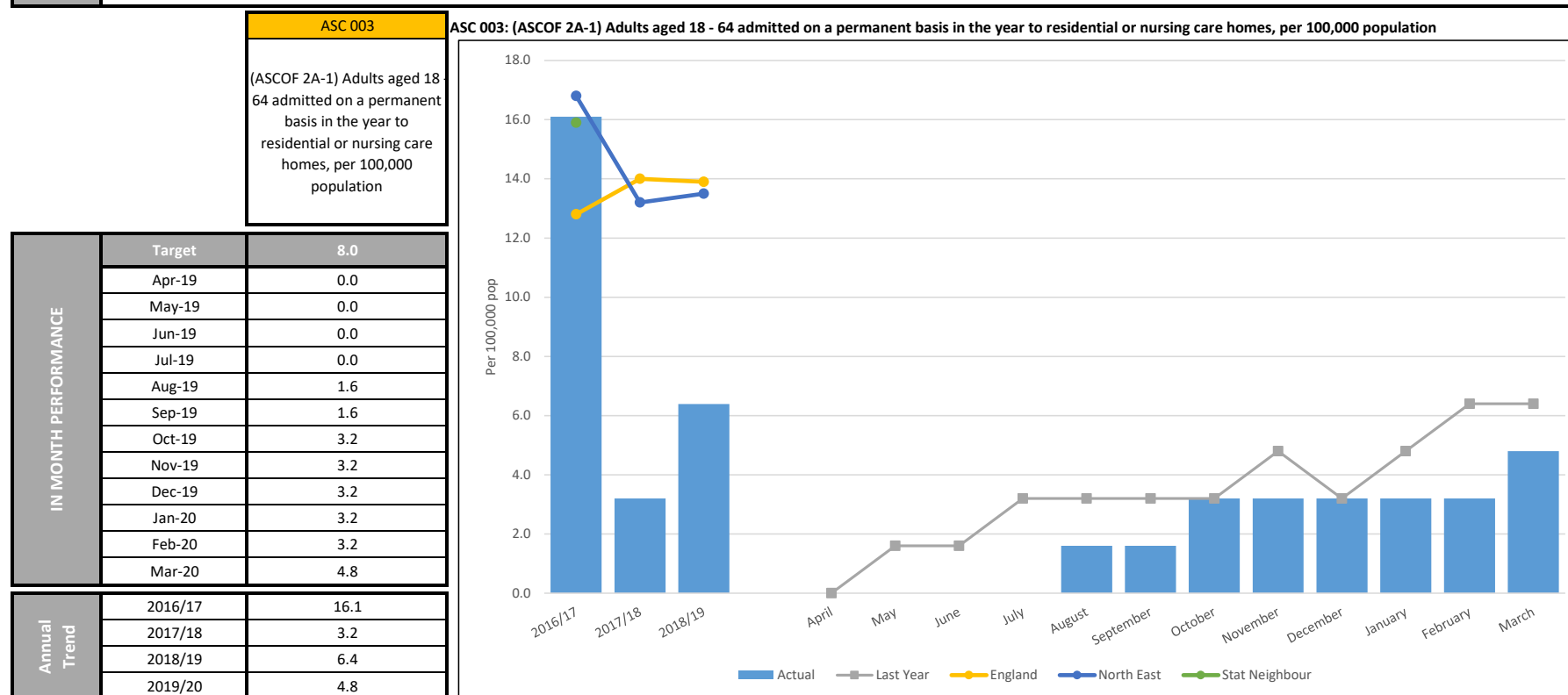
Breakdown of Service Element for each placement

Service Element	
OP Residential	115
EMI Residential	23
OP Nursing	11
EMI Nursing	3

Breakdown of Long Term Support Reasons

Long Term Support Reason	
Physical Support - Personal Care Support	85
Support with Memory and Cognition	28
Mental Health Support	25
Physical Support - Access and Mobility Only	10
Learning Disability Support	2
Sensory Support - Support for Visual Impairment	1
Social Support - Support for Social Isolation / Other	1

SELF DIRECTED SUPPORT	
ASC 003 - Adults aged 18-64 admitted on a permanent basis in the year to residential or nursing care homes	
DEFINITION	<p>REDUCE THE NEED: ASC 003 (ASCOF 2A-1) – Adults aged 18-64 admitted on a permanent basis in the year to residential or nursing care homes (Smaller is better)</p> <p>Numerator: The sum of the number of council-supported permanent admissions of adults (18-64) to residential and nursing care during the year (excluding transfers between residential and nursing care): SALT</p> <p>Denominator: Size of population (aged 18-64) in area (ONS mid-year population estimates).</p>
Performance Analysis	<p>Since April the number of 18-64 year olds who have been permanently admitted to residential care is 3 (4.8 per 100,000 population).</p> <p>The target of ASC 003 is 8 (per 100,000 pop) has been achieved.</p> <p>The outstanding performance for this indicator can be demonstrated when Darlington's 2019/20 performance is compared to the regional figures taken from the ASCOF 2018/19 Return. The figures show that Darlington's 2019-20 of 4.8 (per 100,000 pop) performance would put the borough at the top of the regional table. The 2019/20 ASCOF figures will not be available until towards the end of the year. The regional comparison table can be found on the following page.</p> <p>This performance continues to evidence the robust assurance by Team Managers and Validation Forum.</p>



SELF DIRECTED SUPPORT

ASC 003 - Adults aged 18-64 admitted on a permanent basis in the year to residential or nursing care homes

DEFINITION	<p>REDUCE THE NEED: ASC 003 (ASCOF 2A-1) – Adults aged 18-64 admitted on a permanent basis in the year to residential or nursing care homes (Smaller is better)</p> <p>Numerator: The sum of the number of council-supported permanent admissions of adults (18-64) to residential and nursing care during the year (excluding transfers between residential and nursing care): SALT</p> <p>Denominator: Size of population (aged 18-64) in area (ONS mid-year population estimates).</p>
-------------------	--

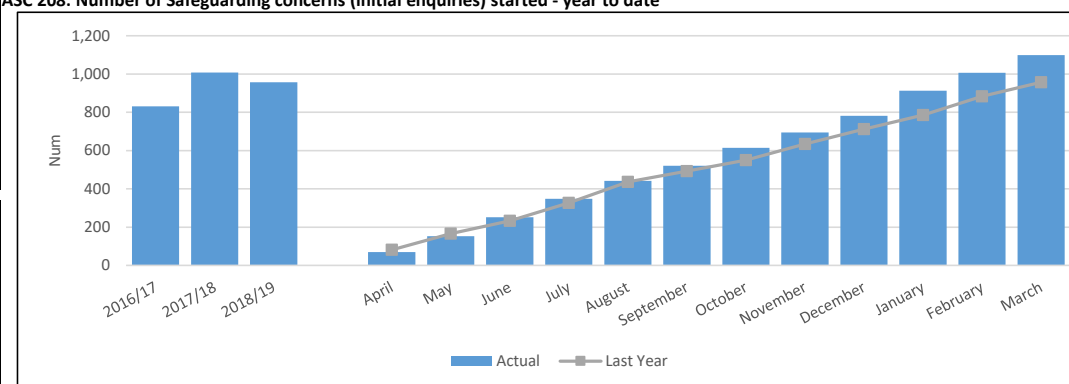
ASCOF 2a(1) - Regional breakdown for permanent admissions 18-64- 2018-19 (smaller is better)

Newcastle upon Tyne	5.0
Darlington	6.4
South Tyneside	6.6
Stockton on Tees	7.6
North Tyneside	9.2
Northumberland	9.8
Durham	12.9
Gateshead	13.7
Hartlepool	19.9
Sunderland	21.3
Redcar and Cleveland	21.6
Middlesbrough	43.4

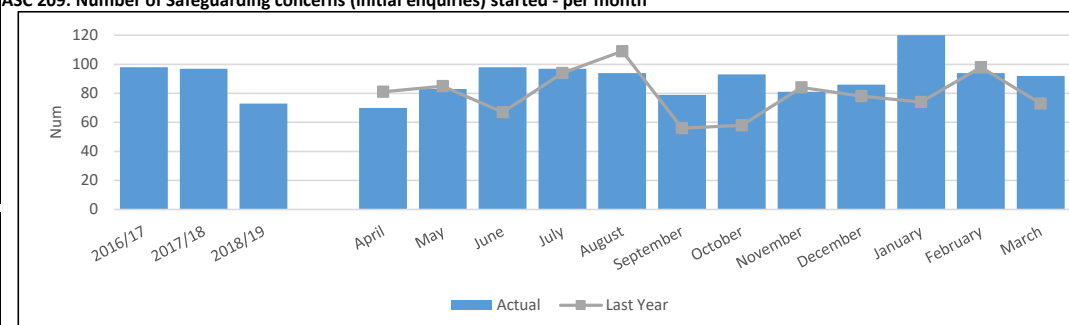
SAFEGUARDING	
Number of Safeguarding initial enquiries started	
DEFINITION	<p>SAFEGUARDING: ASC 208 - Number of Safeguarding initial enquiries started year to date</p> <p>SAFEGUARDING: ASC 209 - Number of Safeguarding initial enquiries started per month</p>
Performance Analysis	<p>There have been 92 safeguarding initial enquiries started in March, which is more than the same time last year (73 in March 2019). The year end total for 2019-20 is 1099 whereas this time last year the year end for 2018-19 was 957.</p> <p>During 2018-19 there was an average of 80 initial enquiries started each month. So 92 in March 2020 is more than last years average. The year end monthly average for 2019-20 is 92.</p>

		ASC 208	ASC 209
		Number of Safeguarding concerns (initial enquiries) started - year to date	Number of Safeguarding concerns (initial enquiries) started - per month
IN MONTH PERFORMANCE	Target not set	-	-
	Apr-19	70.0	70.0
	May-19	153.0	83.0
	Jun-19	251.0	98.0
	Jul-19	348.0	97.0
	Aug-19	442.0	94.0
	Sep-19	521.0	79.0
	Oct-19	614.0	93.0
	Nov-19	695.0	81.0
	Dec-19	781.0	86.0
	Jan-20	913.0	132.0
	Feb-20	1007.0	94.0
	Mar-20	1099.0	92.0
Annual Trend	2016/17	831.0	98.0
	2017/18	1008.0	97.0
	2018/19	957.0	73.0
	2019/20	1099.0	92.0

ASC 208: Number of Safeguarding concerns (initial enquiries) started - year to date



ASC 209: Number of Safeguarding concerns (initial enquiries) started - per month



SAFEGUARDING	
ASC 211 - Number of strategy meetings undertaken i.e. concerns progressed to strategy per month	
DEFINITION	ASC 211 - Number of strategy meetings undertaken i.e. concerns progressed to strategy per month
Performance Analysis	<p>90 of the 318 safeguarding initial enquiries started during Quarter 4 with 22 of the 92 during March 2020 progressed to strategy. That is a 28.3% conversion rate for Quarter 4 with 23.9% in March 2020. The year end figure for 2019-20 was 314 of 1099 which is 28.6%.</p> <p>The 2017-18 year end conversion rate was 13.7%, and 2018-19 year end figure was 23.9% so the current figure of 28.6% is higher than both previous years.</p> <p>There is no target set for this indicator but it is suggested that a 20% conversion rate is the level to aim for performance.</p>

